

KARAKAL

TENNIS
SQUASH
BADMINTON
RACKETBALL
ACCESSORIES
FOOTWEAR
CLOTHING



CATALOGUE 2009



HEAD OFFICE BRISTOL, ENGLAND. **DISTRIBUTORS** ARGENTINA - AUSTRALIA - AUSTRIA - BELGIUM - BERMUDA - BOSNIA - BRAZIL - CANADA - CANARY ISLANDS - CHILE
 CHINA - COLOMBIA - COSTA RICA - CROATIA - CYPRUS - CZECH REPUBLIC - DENMARK - ECUADOR - EL SALVADOR - EGYPT - ESTONIA - FRANCE - GERMANY - GUATAMALA - HONG KONG-
 HOLLAND - HUNGARY - ICELAND - INDIA - INDONESIA - IRAN - ISRAEL - ITALY - JAPAN - KOREA - LATVIA - MALAYSIA - MALTA - MEXICO - NEW CALEDONIA - NEW ZEALAND - NORWAY-
 PAKISTAN - PARAGUAY - PHILIPPINES - POLAND - PORTUGAL - ROMANIA - SERBIA - SINGAPORE - S. IRELAND - SLOVAKIA - SLOVENIA - SOUTH AFRICA - SPAIN - SWEDEN
 SWITZERLAND - TAIWAN R.O.C - UGANDA - UKRAINE - UNITED ARAB EMIRATES - URUGUAY - U.S.A - VENEZUELA - WEST INDIES



NEW PRODUCTS

We have been very busy developing new frames for Tennis, Squash and Badminton. We have completely re-designed the Tennis collection by working closely with Tennis coaches. We have developed some exciting new rackets which we feel will blow you away.

The squash range has been improved with a stunning new frame for the all NEW GTi range. These rackets have a Power Wing incorporated into the shaft which gives increased playability. The Pro frames have also had a big make over in the technical department by adding our famous inner and outer 'Muscle Power' system which dramatically improves the power and control in the frame.

Our Badminton frames have 2 new additions which we call Tour. These rackets now give us a range to satisfy every type of player.

New by request we have added Twin Packs in Pink and White.

WE have introduced another tennis ball - Solo 70 - which is ITF approved. This is slightly bigger than the standard sized ball at 7cm diameter. This was asked for by our coaches to aid development of their young tennis players. The Ace Championship Tennis balls are also now ITF approved.

NEW TECHNOLOGY

GEL SYSTEM

When this is combined with Nano graphite and titanium it makes an incredibly strong frame so when the ball strikes it absorbs and disperses the impact over the entire frame

BODY MAPPING

This years clothing range has gone hi-tech with the designs and materials used. With an emphasis on body heat control this range is without a doubt a true sports collection and not just fashion items.

Essential for success in creating optimal micro climates is the mapping of the body's sweat zones. KARAKAL have developed a superior moisture wicking technology that aids Body Mapping. Constructed from Cool-Tec fabric these garments have strategically placed ventilation zones where your body generates heat whilst wicking away moisture to keep you cool, dry and comfortable.



CONTENTS

- 1 WORLD MAP**
distributors in over 64 countries
- 2 THIS PAGE - NEW STUFF**
new products for the coming season
- 3 RACKET GRIPS**
world famous replacement and overwrap grips
- 5 FOOTWEAR - SPORTS SHOES**
court shoes and cross trainers
- 6 LUGGAGE**
sports bags
- 7 BODY MAPPING**
Team sports wear
- 9 SPORTS CLOTHING**
Team sports & Club polo shirts
- 10 LADIES CLOTHING**
fitness and court clothing
- 13 SOCKS & HEAD/WRISTBANDS**
new improved socks and bands. Water bottles.
- 14 ACCESSORIES**
racket add ons + promotional stickers and banners
- 15 SQUASH RACKETS**
17 Rackets and Squash balls
- 19 BADMINTON RACKETS**
11 racket range and Shuttlecocks
- 22 STRINGS**
Racket strings for all standards
- 23 TENNIS RACKETS**
8 racket range
- 25 COACH TENNIS RACKETS & TENNIS BALLS**
LTA standard & ITF approved tennis balls
- 26 RACKETBALL RACKETS**
4 racket range
Racketball Balls

PU SUPER GRIP

Replacement grip

Introduced over twenty four years ago, with an improved Nano PU surface the KARAKAL PU super grip remains the No1 PU Grip for all racket sport players.

- NEW Blister Pack or box of 24 grips
- Non-Slip Nano PU surface
- Replacement Grip
- Super Absorbent
- Super tacky
- Extra thick
- Self Adhesive
- Universal Length
- Extra long life
- Colours: Assorted, Multi, Duo or Black

Assorted colours x 24 **KA 665**
Black x 24 **KA 667**

Multi colours x 24 **KA 666**
Duo x 24 **KA 601**

Adding 'Nano' sized ceramic particles at a molecular level has greatly improved durability, gripping power and comfort



P.O.S DISPLAY TUB

Allowing larger quantities of KARAKAL's top selling PU Super Grips to be sold from an attractive counter top display tub - PU Super Grip x 36



PU TOUCH SUPERGRIP

Patented PU Grip design with unique straight edge that when fitted to the handle gives a larger, thicker overlap for a more secure feel with added control.

Duo colours x 2 **KA 630** Asia only. Not available in the UK



PU SUPER GRIP

BLACK



REPLACEMENT GRIP

NON SLIP NANO PU SURFACE
SUPER ABSORBENT
SUPER TACKY
EXTRA THICK
SELF ADHESIVE & UNIVERSAL LENGTH
EXTRA LONG LIFE

Black **KA 670**

BLISTER PACK



PU SUPER GRIP

ASSORTED



REPLACEMENT GRIP

NON SLIP NANO PU SURFACE
SUPER ABSORBENT
SUPER TACKY
EXTRA THICK
SELF ADHESIVE & UNIVERSAL LENGTH
EXTRA LONG LIFE

Assorted **KA 668**

BLISTER PACK



PU SUPER GRIP

DUO



REPLACEMENT GRIP

NON SLIP NANO PU SURFACE
SUPER ABSORBENT
SUPER TACKY
EXTRA THICK
SELF ADHESIVE & UNIVERSAL LENGTH
EXTRA LONG LIFE

Dual colours **KA 611**

BLISTER PACK



KUMFY GRIP



REPLACEMENT GRIP

NON SLIP PU 500 SURFACE
BREATHING HOLES FOR A COOL GRIP
ELASTICATED MICROFIBRE BASE
CUSHIONED FEEL
SELF ADHESIVE
EXTRA LONG LIFE

Assorted **KA 618**

BLISTER PACK



KUSHY GRIP



REPLACEMENT GRIP

NON SLIP

PU 500 SURFACE

EXTRA THICK

SUPER CUSHIONED BACKING

SELF ADHESIVE

EXTRA LONG LIFE

Assorted **KA 616** **BLISTER PACK**



NANO 180 AIRGRIP



REPLACEMENT GRIP

SUPER TACKY

NON SLIP PU NANO 500 SURFACE

AIRHOLES FOR A COOL GRIP

ELASTICATED MICROFIBRE BASE

SELF ADHESIVE

EXTRA LONG LIFE

Assorted **KA 625** **BLISTER PACK**



TRAKTION GRIP



REPLACEMENT GRIP

NON SLIP

TRAKTION EMBOSSED

SUPER TACKY

PU 500 SURFACE

SELF ADHESIVE

EXTRA LONG LIFE

Assorted **KA 622** **BLISTER PACK**



NANO 60 GRIP



OVERWRAP GRIP

SUPER TACKY

NON SLIP

ELASTICATED MICROFIBRE BASE

PU NANO SURFACE

AIRHOLES FOR A COOL GRIP

ULTRA THIN 0.6MM

Assorted **KA 6045** **TRIPLE BLISTER PACK**



POINT 75 AIR GRIP



OVERWRAP GRIP

SUPER TACKY

NON SLIP

PU SURFACE

ELASTICATED MICROFIBRE BASE

AIRHOLES FOR A COOL GRIP

THIN 0.75MM

Assorted **KA 6043** **TRIPLE BLISTER PACK**



AIRFLOW PLUS GRIP



REPLACEMENT GRIP

EXTRA THICK

NON SLIP

PU 500 SURFACE

EMBOSSED SURFACE

SELF ADHESIVE

EXTRA LONG LIFE

Assorted **KA 612** **BLISTER PACK**



RIPPLE GRIP



REPLACEMENT GRIP

UNIQUE CONTOUR RIDGE
GIVING EASIER FINGER LOCATION

NON SLIP

PU 500 SURFACE

SELF ADHESIVE

EXTRA LONG LIFE

Assorted **KA 617** **BLISTER PACK**



HOCKEY PU GRIP



REPLACEMENT GRIP

SUPER TACKY PU SURFACE

SUPER ABSORBENT

EXTRA LONG

EXTRA WIDE FOR MAXIMUM STICK COVERAGE

SOFT TOUCH

LONG LIFE

Assorted **KA 607** **BLISTER PACK**



HOCKEY SOFT GRIP



OVERWRAP GRIP

DRY FEEL

SUPER SOFT

SUPER ABSORBENT

NON SLIP

NULLIFIES VIBRATION

Assorted **KA 606** **TWIN BLISTER PACK**



PEACHY 6 GRIP



OVERWRAP GRIP

DRY FEEL

SUPER SOFT

ELASTICATED MICROFIBRE BASE

NON SLIP

SPECIAL PEACH FINISH

ULTRA THIN 0.6MM

Assorted **KA 6047** **TRIPLE BLISTER PACK**



SQUASH
BADMINTON
TENNIS
RACKETBALL
GYM
JOG
TRAINING

SPORTS SHOES



COURT SPORTS SHOE XS-303



SUPERLIGHT

SIZES 40 - 41 - 42 - 42.5 - 43
43.5 - 44 - 44.5 - 45 - 46

Black/Gold **KF 916**

CROSS COURT SHOE XC-505



SIZES 40 - 41 - 42 - 42.5 - 43
43.5 - 44 - 44.5 - 45 - 46

White/Red **KF 920**

COURT SPORTS SHOE XS-280



SIZES 36 - 37 - 38 - 39 - 40 - 41 - 42 - 42.5 -
43 - 43.5 - 44 - 44.5 - 45 - 46

White/Navy **KF 913**

XS-301



SUPERLIGHT

SIZES 36 - 37 - 38 - 39 - 40 - 41 - 42

White/Blue **KF 915**

XC-500



SIZES 36 - 37 - 38 - 39 - 40 - 41 - 42

White/Apple **KF 919**

XS-281



SIZES 36 - 37 - 38 - 39 - 40 - 41 - 42

White/Blue **KF 914**

SUPERLIGHT COURT SHOE

SUPER HI-TACK OUTSOLE - NON MARKING

SUPERIOR GRIP ON ALL INDOOR COURTS

LIGHT WEIGHT PHYLON MIDSOLE

WIDER 'COMFORT' FIT

X-SHOCK EXTREME SHOCK ABSORBING INSOLE

ANTI BACTERIA 'STAYFRESH' SYSTEM

HI-TACK OMNI OUTSOLE - NON MARKING

SUPERB GRIP ON ALL INDOOR COURTS

HIGH PERFORMANCE LIGHTWEIGHT PU UPPER
GIVING EXTRA SUPPORT FOR GYM DISCIPLINES

ANTI BACTERIA 'STAYFRESH' INSOLE SYSTEM

X-SHOCK EXTREME SHOCK ABSORBING INSOLE

COURT SPORTS PLAYERS WHO ALSO USE GYM

HI-TACK OMNI OUTSOLE WITH SUPERB GRIP

PU AND MICROFIBRE UPPER

WIDER 'COMFORT' FIT

ANTI BACTERIA 'STAYFRESH' INSOLE SYSTEM

X-SHOCK EXTREME SHOCK ABSORBING INSOLE

SUITABLE FOR ALL INDOOR COURT SPORTS

SPORTS LUGGAGE

ALL BAGS ARE MADE FROM SUPER LIGHT RIP-STOP POLYESTER

RB-55 Large Racket Bag - Graphite/Royal KZ 994

- 2 Racket Pockets Hold a minimum of 8 Rackets
- Central Zipped Kit Pocket
- Zipped Side pocket for Valuables / Accessories
- Backpack System for easy carrying.
- 70 cm x 35 cm x 32 cm. 55 litre Capacity

RB-35 Racket Bag - Graphite/Royal KZ 993

- 2 Racket Pockets Hold a minimum of 8 Rackets
- Zipped Side pocket for Valuables/ Accessories
- Backpack System for easy carrying
- 75 cm x 30 cm x 26 cm. 35 litre Capacity

RB-25 Racket Bag - Graphite/Royal KZ 992

- Hold a minimum of 4 Rackets
- Zipped Side pocket for Valuables / Accessories
- Padded Shoulder Strap for easy carrying
- 75 cm x 16 cm x 30 cm. 25 litre Capacity

RB-15 Backpack - Graphite/Royal KZ 997

- Hold an Oversize Tennis Racket or at least 2 Squash or Badminton Rackets
- Zipped Front and centre pockets for Valuables/Accessories
- Padded Shoulder Carrying System
- 46 cm x 18 cm x 38 cm. 15 litre Capacity



FIT BAG



LADIES FITNESS BAG

- SOFT TOUCH LIGHTWEIGHT MICROFIBRE
- CONTRAST LINING
- EXPANDABLE ZIPPED END PANELS
- FRONT VALUABLES ZIPPED POCKET
- ZIPPED END POCKETS

Navy/ Lilac	KZ 998L
Navy/ Baby Blue	KZ 998B
Navy/ Pink	KZ 998P

RAKPAK



DAY RACKET BAG

Child's backpack made from strong Rip-Stop Polyester with Junior Tennis racket (Coach 19, 21, 23 or 25)

FREE - 2 TENNIS BALLS

FREE - DRINKS BOTTLE

Navy/ Royal KZ 350

BODY MAPPING SPORTS COLLECTION

Q4-645 TATTOO
TENNIS RACKET
RUSSET **TZ** POLO SHIRT
RUSSET **TS** SHORTS

WHITE/NAVY
TT TEE SHIRT
NAVY **TS** SHORTS

Q4-645 TATTOO
TENNIS RACKET
RUSSET **TZ** POLO SHIRT
RUSSET **TS** SHORTS

WHITE/NAVY **TZ**
POLO SHIRT
NAVY **TS** SHORTS

WHITE/NAVY **TZ**
POLO SHIRT
NAVY **TS** SHORTS

RUSSET HOODIE **TZ**
WHITE **TB** POLO SHIRT
RUSSET **TS** SHORTS

NAVY HOODIE **TZ**
WHITE/NAVY **TT**
TEE SHIRT
NAVY **TS** SHORTS

RUSSET/BLACK/WHITE **TT** TEE SHIRT
RUSSET **TS** SHORTS

WHITE **TB**
POLO SHIRT
RUSSET **TS**
SHORTS

RUSSET/BLACK/WHITE
TT TEE SHIRT
RUSSET **TS** SHORTS

NAVY/WHITE **TB** POLO SHIRT
WHITE **TS** SHORTS

NAVY/WHITE **TB** POLO SHIRT
WHITE **TS** SHORTS



BODY MAPPING

Essential for success in creating optimal micro climates is the mapping of the body's sweat zones. KARAKAL have developed a superior moisture wicking technology that aids Body Mapping. Constructed from Cool-Tec fabric these garments have strategically placed ventilation zones where your body generates heat whilst wicking away moisture to keep you cool, dry and comfortable.

COOL TEC TB BUTTON POLO SHIRT

NEW BODY MAPPING SYSTEM.

Body shaped with a 2 button placket.

Mesh under arm, sides and back panel.

Lightweight Front and Shoulder panels.

Stretch Mid weight Cool-Tec panels at the Kidney areas and arms.

20mm longer back. **S - M - L - XL - XXL**

Navy/White **KC 500N** White **KC 500W**

COOL TEC TZ ZIP POLO SHIRT

NEW BODY MAPPING SYSTEM.

Body shaped with zipped placket.

Mesh under arm, sides and back panel.

Lightweight Front, Shoulder and lower back panels.

Stretch Mid weight Cool-Tec panels at the Kidney areas and arms.

20mm longer back. **S - M - L - XL - XXL**

Russet/ Black/White **KC 501R**

White/Navy **KC 501W**

COOL TEC TT TEE SHIRT

NEW BODY MAPPING SYSTEM.

Mesh under arm and back panel.

Lightweight Front, Shoulder and lower back panels.

Stretch Mid weight Cool-Tec panels at the Kidney areas and arms.

20mm longer back. **S - M - L - XL - XXL**

Russet/ Black/White **KC 502R**

White/Navy **KC 502W**



TB POLO SHIRT



TZ POLO SHIRT



TT TEE SHIRT

DETROIT XT HOODIE

2 front pockets and Contrast Hood lining.

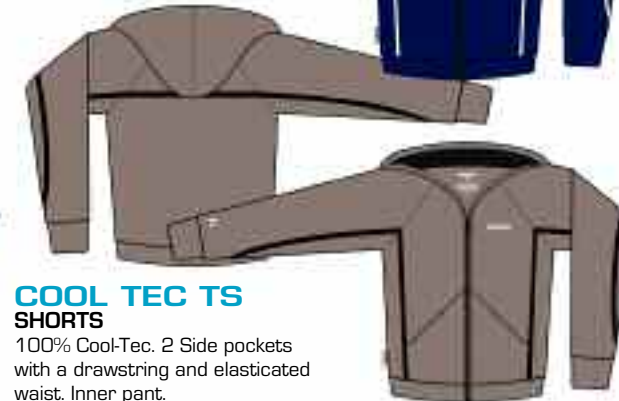
Made from 56% Cotton. 38% Cool-Tec. 6% Stretch MICRO-TEC

XS - S - M - L - XL

Navy **KC 503N** Russet **KC 503R**



XT HOODIE



COOL TEC TS SHORTS

100% Cool-Tec. 2 Side pockets with a drawstring and elasticated waist. Inner pant.

S - M - L - XL - XXL

Navy **KC 504N** Russet **KC 504R**

White **KC 504W** Black **KC 504B**



TS SHORTS

**MATCH-8 COOL
BUTTON POLO SHIRT**

NEW 100% Cool-Tec. Body shaped with a 2 button placket, mesh under arm and side panels and 20mm longer back.

S - M - L - XL - XXL

White/Navy **KC 750**

**SET-8
ZIP POLO SHIRT**

NEW 100% Cool-Tec. Body shaped with a zipped placket, mesh under arm and side panels and 20mm longer back.

S - M - L - XL - XXL

Navy/White **KC 751**

**DETROIT-8
ZIP OFF HOODIE**

2 front pockets and zip off hood. Made from 56% Cotton. 38% Cool-Tec.

6% Stretch MICRO-TEC

XS - S - M - L - XL

Navy **KC 752**

**COOL TEC
SHORTS**

100% Cool-Tec. 2 Side pockets with a drawstring and elasticated waist. Inner pant.

S - M - L - XL - XXL

Navy **KC 739**

**PROMO
TECHNICAL
TEE SHIRT**

Shaped with rounded bottom. Same print front and back.

XXS - XS - S - M - L - XL

White **KC 800W**
Blue **KC 800B**
Russet **KC 800R**

**JOGS & SHORTS****GS3 SHORTS**

100% POLYESTER TACTEL with DUPONT TEFLON FINISH

2 SIDE POCKETS

INNER PANT

XS - S - M - L - XL - XXL

Navy **KC 531N** Black **KC 531B** White **KC 531W**

**GT3 SHORTS**

100% POLYESTER TACTEL with DUPONT TEFLON FINISH

EXTRA LONG LEGS - 2 SIDE POCKETS

INNER PANT

XS - S - M - L - XL - XXL

Navy **KC 532N** White **KC 532W**

**TJ3 JOG BOTTOMS**

100% POLYESTER TACTEL with DUPONT TEFLON FINISH

2 SIDE POCKETS - FULL INNER LINING

XS - S - M - L - XL - XXL

Navy **KC 530N** Black **KC 530B**

**CLUB POLO SHIRTS****IN STOCK CLUB POLO SHIRTS**

Polyester / Cotton. **S - M - L - XL - XXL**

Cocoa **KC 810** Sky **KC 812** Latte **KC 807**
Jet **KC 806** Aqua **KC 809** Candy **KC 813**
Cream **KC 811**

**AVAILABLE APRIL 2009 CLUB POLO SHIRTS**

Polyester / Cotton. **S - M - L - XL - XXL**

Midnight **KC 805** Jet **KC 806** Cocoa **KC 810**
Ocean Blue **KC 816** Aqua **KC 809** Sand **KC 815**
Rosso Red **KC 808** Moss **KC 814** White **KC 817**

LADIES CLOTHING

BODY MAPPING

Essential for success in creating optimal micro climates is the mapping of the body's sweat zones. KARAKAL have developed a superior moisture wicking technology that aids Body Mapping. Constructed from Cool-Tec fabric these garments have strategically placed ventilation zones where your body generates heat whilst wicking away moisture to keep you cool, dry and comfortable.

LADIES SKORT III

STRETCH COOL-TEC
86% Polyester COOL-TEC.
14% Stretch MICRO-TEC
Ball pocket on pant
Sizes **XS - S - M - L - XL**
Navy **KC 151N** White **KC 151W**
Black **KC 151B** Hot Pink **KC 151H**

LADIES SKORT

STRETCH COOL-TEC
86% Polyester COOL-TEC.
14% Stretch MICRO-TEC
Ball pocket on pant
Sizes **S - M - L - XL**
Navy **KC 120N** White **KC 120W**
Black **KC 120K**

LADIES CAPRI III

FIT PANT
86% Polyester COOL-TEC.
14% Stretch MICRO-TEC
Sizes **XS - S - M - L - XL**
Navy **KC 153N** Black **KC 153B**

LADIES CAPRI

FIT PANT
STRETCH COOL-TEC
86% Polyester COOL-TEC.
14% Stretch MICRO-TEC
Sizes **XS - S - M - L - XL**
Navy **KC 131N** Black **KC 131B**

LADIES FIT PANT III

STRETCH COOL-TEC
86% Polyester COOL-TEC.
14% Stretch MICRO-TEC
Sizes **XS - S - M - L - XL**
Navy **KC 152N** Black **KC 152B**

LADIES FIT PANT

STRETCH COOL-TEC
86% Polyester COOL-TEC.
14% Stretch MICRO-TEC
Sizes **XS - S - M - L - XL**
Navy **KC 122N** Black **KC 122B**

LADIES FIT SHORT

STRETCH COOL-TEC
86% Polyester COOL-TEC.
14% Stretch MICRO-TEC
Sizes **XS - S - M - L - XL**
Navy **KC 132N** Black **KC 132B**

LADIES SHORT

MICRO-TEC
100% Polyester Tactel with
Dupont Teflon Finish. 2 side pockets
Sizes **S - M - L - XL**
Navy **KC 128N**



TEE SHIRT

STRETCH COOL-TEC
86% Polyester COOL-TEC.
14% Stretch MICRO-TEC
Sizes **XS - S - M - L - XL**
Hot Pink **KC 148H** Apple **KC 148A**
Navy **KC 148N** White **KC 148W**

TANK

STRETCH COOL-TEC
86% Polyester COOL-TEC.
14% Stretch MICRO-TEC
Full Chest Support - Body Shaped
Sizes **XS - S - M - L - XL**
Black **KC 147B** White **KC 147W**
Navy **KC 147N** Apple **KC 147A**
Hot Pink **KC 147H**

POLO SHIRT

STRETCH COOL-TEC
86% Polyester COOL-TEC.
14% Stretch MICRO-TEC
Sizes **XS - S - M - L - XL**
Navy **KC 149N** Hot Pink **KC 149H**
White **KC 149W**

COOL VEST

STRETCH COOL-TEC
86% Polyester COOL-TEC.
14% Stretch MICRO-TEC
Sizes **XS - S - M - L - XL**
Black **KC 146B** White **KC 146W**
Navy **KC 146N** Apple **KC 146A**
Hot Pink **KC 146H**

HOODIE

STRETCH MICRO-TEC
56% Cotton. 38% Cool-Tec.
6% Stretch MICRO-TEC
Full zip front & side pockets
Sizes **XS - S - M - L - XL**
Black **KC 150B** Navy **KC 150N**
White **KC 150W**

LADIES JOG PANT II

MICRO-TEC
100% Polyester Tactel with
Dupont Teflon Finish
2 side pockets
Sizes **XS - S - M - L - XL**
Navy **KC 154N** Black **KC 154B**

LADIES JOG PANT

MICRO-TEC
100% Polyester Tactel with
Dupont Teflon Finish
2 side pockets
Sizes **XS - S - M - L - XL**
Navy **KC 127N** Black **KC 127B**

LADIES CAPRI II JOG

MICRO-TEC
100% Polyester Tactel with
Dupont Teflon Finish
2 side pockets
Sizes **XS - S - M - L - XL**
Navy **KC 155N** Black **KC 155B**

LADIES CAPRI JOG

MICRO-TEC
100% Polyester Tactel with
Dupont Teflon Finish
2 side pockets
Sizes **XS - S - M - L - XL**
Navy **KC 135N** Black **KC 135B**

LADIES CLOTHING

LADIES CLOTHING

FITNESS & RACKET SPORTS COLLECTION

BLACK TANK
WHITE SHORT II

BLACK TANK
BLACK FIT PANTS II

BLACK TANK
BLACK FIT SHORTS

HOT PINK TEE SHIRT
NAVY CAPRI JOG PANTS II

NAVY VEST
NAVY FIT PANTS II

NAVY POLO SHIRT
NAVY CAPRI JOG PANTS II

WHITE TANK
HOT PINK SHORT II

WHITE HOODIE
NAVY POLO SHIRT
NAVY CAPRI JOG PANTS II

BLACK TANK
HOT PINK SHORT II



LADIES CLOTHING

FITNESS & RACKET SPORTS COLLECTION

WHITE TANK
WHITE SKIRT II

HOT PINK POLO SHIRT
NAVY CAPRI JOG PANTS II

HOT PINK VEST
NAVY FIT PANTS II

NAVY TEE SHIRT
NAVY JOG PANTS II

BLACK TANK
BLACK FIT PANTS II

BLACK HOODIE
HOT PINK TANK
BLACK FIT PANTS III

WHITE POLO SHIRT
NAVY CAPRI JOG PANTS II
GASAG TATTOO TENNIS RACKET

APPLE VEST
NAVY FIT PANTS III



POLO SHIRT

86% Polyester Cool-Tec 14% Stretch Micro-Tec

Sizes **XS - S - M - L - XL**

Mint **KA 142M** Pink **KA 142P**



TEESHIRT

86% Polyester Cool-Tec 14% Stretch Micro-Tec

Sizes **XS - S - M - L - XL**

Mint **KA 143M** Pink **KA 143P**



COOL VEST

86% Polyester Cool-Tec 14% Stretch Micro-Tec

Sizes **XS - S - M - L - XL**

Mint **KA 146M** Pink **KA 146P**



JACKET

56% Cotton 38% Cool-Tec 6% Stretch Micro-Tec

Sizes **XS - S - M - L - XL**

Navy - Pink/Mint stripes **KA 144N**



SPORTS SOCKS

- Cotton rich
- Soft touch
- Extra thick sole
- Available in 2 sizes
3-6 or 7-12

White 3-6 **KC 516**
White 7-12 **KC 517**
SINGLE PAIR PACK

X2 TECHNICAL SPORT SOCKS

- **DOUBLE DENSITY**
- Cotton Lycra
- Flat linked toe seams
- Double thickness toe & heel
- Elasticated Arch support
- Elasticated ribbed leg
- Available in 2 Lengths
- Ankle
- Trainer
- Available in 2 sizes
3-6 or 7-12

Ankle 3-6 **KC 518**
Ankle 7-12 **KC 519**
Trainer 3-6 **KC 514**
Trainer 7-12 **KC 515**
SINGLE PAIR PACK

X3 TECHNICAL SPORT SOCKS

- Ultimate Shock Absorbing Sock.
- Triple density version of the X2
- Technical Sports Sock
- **TRIPLE DENSITY**
- Cotton Lycra
- Flat linked toe seams
- Triple thickness toe & heel
- Elasticated Arch support
- Elasticated ribbed leg
- Available in 2 Lengths
- Ankle
- Trainer
- Available in 2 sizes
3-6 or 7-12

Ankle 3-6 **KC 510**
Ankle 7-12 **KC 511**
Trainer 3-6 **KC 509**
Trainer 7-12 **KC 508**
SINGLE PAIR PACK



WRISTBANDS HEADBANDS



NEW FORMULA

HIGH DENSITY SUPER SOFT

ABSORBENT COTTON with KARAKAL LOGO

WRISTBANDS & JUMBO WRISTBAND AVAILABLE IN
WHITE, NAVY, BLACK OR RED

HEADBANDS AVAILABLE IN WHITE OR NAVY

Wristbands x 2 **KA 609**

Jumbo Wristband x 1 **KA 6033**

Headband x 1 **KA 608**

DRINKS BOTTLES



The Pro 600 Sport version has a clear hinged cap to keep the rubberised mouth piece clean a screw top for easy filling and a clear view liquid level indicator.

The Red Promo drinks bottle has a push filler cap and plastic retractable mouth piece.

Pro 600 Sports Bottle **KA 631**

Red Drinks Bottle **KA 630**

BANNERS & STICKERS



TIN STICKERS

KARAKAL LOGO STICKER = 130 cm X 40 cm

'A' BALL LOGO STICKER = 35 cm X 40 cm

BANNERS

SILK STYLE BANNERS IN 3 COLOURS WITH EYELETS FOR HANGING = 200 cm X 50 cm

STICKERS

LONG DOOR/WINDOW STICKERS = 21 cm X 7.5 cm

CRASHTAPE

Super strong head protection tape - Protects the head of any racket - Non marking, Self adhesive - 2.5cm x 2.4m long

White **KA 605**

ANTI VIBRATION DAMPNERS

STRETCHY DAMPNER

Weaves through strings and is secured with hooks at both ends - Thick rubber cord - Kills vibration

Assorted **KA 6038** TWIN BLISTER PACK

LOGO DAMPNER

Anti Vibration dampners lock strings into position - Best fitted to main power strings - Kills vibration

KA 604 TWIN BLISTER PACK

BUTTON DAMPNER

Anti Vibration dampners lock strings into position - Best fitted to main power strings - Kills vibration

Assorted **KA 602** TRIPLE BLISTER PACK

TENNIS BALL CLIP

Holds one tennis ball. Clips onto top of shorts or skort - Easy to remove - Strong plastic construction

White **KA 6141** SINGLE BLISTER PACK

PRO Eye protection goggles

Polycarbonate eye guards. Anti-Scratch inner and outer lens. Anti-Fog inside lens - Microfibre carry bag. CE Directive 89/686/EEC
BS 7930-1:1998 Eye Protectors for Racket Sports

PRO 3000

Adult size - Adjustable elastic strap Superlight for exceptional comfort

PRO 2500

Ladies / Junior size Detachable elastic strap

Pro 3000 **KA 644** Pro 2500 **KA 643**
SINGLE BOX PACK



SX-100

GEL

WORLD'S LIGHTTEST



KS 4519

100 gms FRAME WEIGHT

NANO GRAPHITE MAGNESIUM GEL

NANO SUPERLIGHT RESIN

GROOVE POWER SYSTEM

'A' POWER SHAFT

CONSTANT TAPER FRAME 18 - 16 mm

ONE PIECE CONSTRUCTION

MIDSIZE HEAD - 455 sq cms

FAN STRING PATTERN 14/19

FULL RACKET COVER

FITTED WITH THE WORLD'S NO.1 PU SUPER GRIP



SX-140

NEW
MODEL



KS 4539

140 gms FRAME WEIGHT

NANO GRAPHITE TITANIUM

NANO SUPERLIGHT RESIN

GROOVE POWER SYSTEM

'A' POWER SHAFT

CONSTANT TAPER FRAME 18 - 16 mm

ONE PIECE CONSTRUCTION

MIDSIZE HEAD - 455 sq cms

FAN STRING PATTERN 14/19

FULL RACKET COVER

FITTED WITH THE WORLD'S NO.1 PU SUPER GRIP



EVO 5SL

GEL

NEW
IMPROVED FRAME



KS 4719

120 gms FRAME WEIGHT

SUPERLIGHT NANO TITANIUM GEL

NANO SUPERLIGHT RESIN

POWER SHAFT

SUPER INNER & OUTER MUSCLE SYSTEM

ONE PIECE CONSTRUCTION

SQUARE STRING PATTERN 14/18

CONSTANT TAPER FRAME 22 - 18 mm

MIDPLUS HEAD - 495 sq cms

FULL RACKET COVER

FITTED WITH THE WORLD'S NO.1 PU SUPER GRIP



EVO 5T

NEW
IMPROVED FRAME



KS 4729

130 gms FRAME WEIGHT

NANO GRAPHITE TITANIUM

NANO SUPERLIGHT RESIN

POWER SHAFT

SUPER INNER & OUTER MUSCLE SYSTEM

ONE PIECE CONSTRUCTION

SQUARE STRING PATTERN 14/18

CONSTANT TAPER FRAME 22 - 18 mm

MIDPLUS HEAD - 495 sq cms

FULL RACKET COVER

FITTED WITH THE WORLD'S NO.1 PU SUPER GRIP



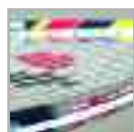
PRO 4SL

GEL

NEW
FRAME



As used by
CAMERON PILLEY



KS 4739

125 gms FRAME WEIGHT

SUPERLIGHT NANO TITANIUM GEL-

NANO SUPERLIGHT RESIN

TRI-TEC FRAME SECTION

'A' POWER SHAFT

ONE PIECE CONSTRUCTION

CONSTANT TAPER FRAME 20 - 16

MIDPLUS HEAD - 475 sq cms

SQUARE STRING PATTERN 14/19

FULL RACKET COVER

FITTED WITH THE WORLD'S NO.1 PU SUPER GRIP



PRO 4Ti

NEW
FRAME



KS 4749

135 gms FRAME WEIGHT

NANO GRAPHITE TITANIUM

NANO SUPERLIGHT RESIN

TRI-TEC FRAME SECTION

'A' POWER SHAFT

ONE PIECE CONSTRUCTION

CONSTANT TAPER FRAME 20 - 16

MIDPLUS HEAD - 475 sq cms

SQUARE STRING PATTERN 14/19

FULL RACKET COVER

FITTED WITH THE WORLD'S NO.1 PU SUPER GRIP



MX-125

GEL



KS 4579

125 gms FRAME WEIGHT

SUPERLIGHT NANO TITANIUM GEL

INTEGRATED VIBRATION DAMPNER

'A' POWER SHAFT

SUPER INNER & OUTER MUSCLE SYSTEM

ONE PIECE CONSTRUCTION

CONSTANT TAPER FRAME 18.5 - 15.5 mm

MIDPLUS HEAD - 480 sq cms

FAN STRING PATTERN 14/19

FULL RACKET COVER

FITTED WITH THE WORLD'S NO.1 PU SUPER GRIP



MX-140



KS 4629

140 gms FRAME WEIGHT

NANO GRAPHITE TITANIUM

INTEGRATED VIBRATION DAMPNER

'A' POWER SHAFT

SUPER INNER & OUTER MUSCLE SYSTEM

ONE PIECE CONSTRUCTION

CONSTANT TAPER FRAME 18.5 - 15.5 mm

MIDPLUS HEAD - 480 sq cms

FAN STRING PATTERN 14/19

FULL RACKET COVER

FITTED WITH THE WORLD'S NO.1 PU SUPER GRIP



SQUASH RACKETS

MXT-140 TATTOO



KS 4709

140 gms FRAME WEIGHT	
NANO GRAPHITE TITANIUM	
INTEGRATED VIBRATION DAMPNER	
'A' POWER SHAFT	
SUPER INNER & OUTER MUSCLE SYSTEM	
ONE PIECE CONSTRUCTION	
CONSTANT TAPER FRAME 18.5 - 15.5 mm	
MIDPLUS HEAD - 480 sq cms	
FAN STRING PATTERN 14/19	
FULL RACKET COVER	
FITTED WITH THE WORLD'S NO.1 PU SUPER GRIP	

MX-150



KS 4589

150 gms FRAME WEIGHT	
100% HI-MODULUS GRAPHITE	
'A' POWER SHAFT	
ONE PIECE CONSTRUCTION	
SUPER INNER & OUTER MUSCLE SYSTEM	
CONSTANT TAPER FRAME 18.5 - 15.5 mm	
MIDPLUS HEAD - 480 sq cms	
FAN STRING PATTERN 14/19	
3/4 RACKET COVER	
FITTED WITH THE WORLD'S NO.1 PU SUPER GRIP	

BX-130 GEL



As used by
VANESSA ATKINSON

KS 4639

130 gms FRAME WEIGHT	
SUPERLIGHT NANO TITANIUM GEL	
'A' POWER SHAFT	
GROOVE POWER SYSTEM	
SUPER INNER & OUTER MUSCLE SYSTEM	
ONE PIECE CONSTRUCTION	
CONSTANT TAPER FRAME 16.5 - 15 mm	
MIDPLUS HEAD - 470 sq cms	
FAN STRING PATTERN 14/19	
FULL RACKET COVER	
FITTED WITH THE WORLD'S NO.1 PU SUPER GRIP	

BX-150



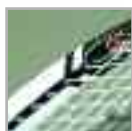
KS 4659

150 gms FRAME WEIGHT	
NANO GRAPHITE	
'A' POWER SHAFT	
GROOVE POWER SYSTEM	
SUPER INNER & OUTER MUSCLE SYSTEM	
ONE PIECE CONSTRUCTION	
CONSTANT TAPER FRAME 16.5 - 15 mm	
MIDPLUS HEAD - 470 sq cms	
FAN STRING PATTERN 14/19	
3/4 RACKET COVER	
FITTED WITH THE WORLD'S NO.1 PU SUPER GRIP	

GTi-120

GEL

NEW
RACKET



NANO
gel
SYSTEM

THE
WORLD'S
NO.1
PU GRIP

KS 4759

120 gms FRAME WEIGHT

SUPERLIGHT HIGH IMPACT DISPERSION
NANO TITANIUM GEL

'A' POWER SHAFT WITH POWER WINGS

CONSTANT TAPER FRAME 19.5 - 15.5 mm

ONE PIECE CONSTRUCTION

MIDSIZE HEAD 455 sq cms

SQUARE STRING PATTERN 14/20

FULL RACKET COVER

FITTED WITH THE WORLD'S NO.1 PU SUPER GRIP



GTi-150

NEW
RACKET



THE
WORLD'S
NO.1
PU GRIP

KS 4769

150 gms FRAME WEIGHT

100% NANO GRAPHITE

'A' POWER SHAFT WITH POWER WINGS

CONSTANT TAPER FRAME 19.5 - 15.5 mm

ONE PIECE CONSTRUCTION

MIDSIZE HEAD 455 sq cms

SQUARE STRING PATTERN 14/20

3/4 RACKET COVER

FITTED WITH THE WORLD'S NO.1 PU SUPER GRIP



CSX

FUSION, TOUR & JUNIOR



CSX FUSION KS 459 CSX TOUR KS 460 CSX JUNIOR KS 461

FUSION - 170 gms
TOUR & JUNIOR - 180 gms FRAME WEIGHT

FUSION - GRAPHITE ALUMINIUM TITANIUM FUSION
TOUR & JUNIOR - 7000 SERIES ALUMINIUM

JUNIOR LENGTH RACKET - 600 mm

NEW MUSCLE FRAME

PARALLEL BEAM

TWO PIECE CONSTRUCTION

SQUARE STRING PATTERN

MIDPLUS HEADS

3/4 RACKET COVER

FITTED WITH THE WORLD'S NO.1 PU SUPER GRIP

SQUASH BALLS



BIG BALLS

INSTANT WARM-UP

DESIGNED FOR COACHING

NON MARKING RUBBER

15% OVERSIZED - 46 mm

Big Ball x 12

KZ 659



SRA STANDARD

NON MARKING RUBBER

- DOUBLE YELLOW DOT -
Extra Super Slow for Tournament play
- YELLOW DOT -
Super Slow for Tournament play
- RED DOT -
Medium Speed for Intermediates,
Coaches and improvers

Double Yellow Dot - BOX of 12 KZ 598

Yellow Dot x 12 - BOX of 12 KZ 675

Red Dot x 12 - BOX of 12 KZ 676

SQUASH RACKETS

SL-70 GEL



WORLD'S LIGHTTEST



KB 3509

70 gms FRAME WEIGHT

NANO GRAPHITE - MAGNESIUM GEL

HI-FLEX PRECISION SHAFT

CONSTANT TAPER FRAME 10 - 10.7 mm

CONVENTIONAL HEAD WITH MUSCLE SYSTEM

HIGH STRENGTH HEAD LOOP TAKES UPTO 30 lbs

22/23 STRING PATTERN

TWO PIECE CONSTRUCTION - WOODEN HANDLE

DOUBLE GROMMET ADDED AT TEE JOINT FOR STRENGTH

FULL RACKET COVER

FITTED WITH THE WORLD'S NO.1 PU SUPER GRIP



SL-80 GEL



KB 3569

80 gms FRAME WEIGHT

NANO GRAPHITE - TITANIUM GEL

HI-FLEX PRECISION SHAFT

VARIABLE TAPER FRAME 13 - 12 mm

WIDE BODY HEAD WITH MUSCLE SYSTEM

HIGH STRENGTH HEAD LOOP TAKES UPTO 30 lbs

22/24 STRING PATTERN

TWO PIECE CONSTRUCTION - WOODEN HANDLE

DOUBLE GROMMET ADDED AT TEE JOINT FOR STRENGTH

FULL RACKET COVER

FITTED WITH THE WORLD'S NO.1 PU SUPER GRIP



TOUR LITE GEL

NEW
RACKET



KB 3519

84 gms FRAME WEIGHT

NANO GRAPHITE TITANIUM GEL

ISOMETRIC HEAD

HIGH FLEX PRECISION SHAFT

VARIABLE TAPER FRAME 10 - 10.5 mm

HIGH STRENGTH HEAD LOOP TAKES UPTO 30 lbs

22/22 STRING PATTERN

TWO PIECE CONSTRUCTION - WOODEN HANDLE

DOUBLE GROMMET ADDED AT TEE JOINT FOR STRENGTH

FULL RACKET COVER

FITTED WITH THE WORLD'S NO.1 PU SUPER GRIP



TOUR GEL

NEW
RACKET



KB 3539

86 gms FRAME WEIGHT

NANO GRAPHITE TITANIUM GEL

ISOMETRIC HEAD

HIGH FLEX PRECISION SHAFT

VARIABLE TAPER FRAME 10 - 10.5 mm

HIGH STRENGTH HEAD LOOP TAKES UPTO 30 lbs

22/22 STRING PATTERN

TWO PIECE CONSTRUCTION - WOODEN HANDLE

DOUBLE GROMMET ADDED AT TEE JOINT FOR STRENGTH

FULL RACKET COVER

FITTED WITH THE WORLD'S NO.1 PU SUPER GRIP



M-TEC 70

GEL

WORLD'S LIGHTEST



KB 3769

70 gms FRAME WEIGHT
SUPERLIGHT NANO GRAPHITE TITANIUM GEL
ISOMETRIC HEAD WITH SUPER MUSCLE SYSTEM
HI-FLEX PRECISION SHAFT
CONSTANT TAPER FRAME 9.8 - 10.5 mm
HIGH STRENGTH HEAD LOOP TAKES UPTO 30 lbs
22/22 STRING PATTERN
TWO PIECE CONSTRUCTION - WOODEN HANDLE
DOUBLE GROMMET ADDED AT TEE JOINT FOR STRENGTH
FULL RACKET COVER
FITTED WITH THE WORLD'S NO.1 PU SUPER GRIP

M-TEC 75

TATTOO



KB 3579

75 gms FRAME WEIGHT
SUPERLIGHT NANO GRAPHITE TITANIUM GEL
ISOMETRIC HEAD WITH SUPER MUSCLE SYSTEM
HI-FLEX PRECISION SHAFT
CONSTANT TAPER FRAME 10 - 11.5 mm
HIGH STRENGTH HEAD LOOP TAKES UPTO 30 lbs
22/22 STRING PATTERN
TWO PIECE CONSTRUCTION - WOODEN HANDLE
DOUBLE GROMMET ADDED AT TEE JOINT FOR STRENGTH
FULL RACKET COVER
FITTED WITH THE WORLD'S NO.1 PU SUPER GRIP

REVO M-76

NEW
ASIA ONLY



KB 3899

76 gms FRAME WEIGHT
SUPERLIGHT NANO GRAPHITE TITANIUM
ISOMETRIC HEAD WITH SUPER MUSCLE SYSTEM
HI-FLEX PRECISION SHAFT
CONSTANT TAPER FRAME 10 - 10.7 mm
HIGH STRENGTH HEAD LOOP TAKES UPTO 30 lbs
22/22 STRING PATTERN
TWO PIECE CONSTRUCTION - WOODEN HANDLE
DOUBLE GROMMET ADDED AT TEE JOINT FOR STRENGTH
FULL RACKET COVER
FITTED WITH THE WORLD'S NO.1 PU SUPER GRIP

REVO M-77

NEW
ASIA ONLY



KB 3909

77 gms FRAME WEIGHT
SUPERLIGHT NANO GRAPHITE TITANIUM
ISOMETRIC HEAD WITH SUPER MUSCLE SYSTEM
HI-FLEX PRECISION SHAFT
CONSTANT TAPER FRAME 10 - 10.7 mm
HIGH STRENGTH HEAD LOOP TAKES UPTO 30 lbs
22/22 STRING PATTERN
TWO PIECE CONSTRUCTION - WOODEN HANDLE
DOUBLE GROMMET ADDED AT TEE JOINT FOR STRENGTH
FULL RACKET COVER
FITTED WITH THE WORLD'S NO.1 PU SUPER GRIP

BADMINTON RACKETS

CBX-7



KB 362

90 gms FRAME WEIGHT
GRAPHITE COMPOSITE HEAD
FULL GRAPHITE SHAFT
TWO PIECE CONSTRUCTION
3/4 HEAD COVER
FITTED WITH THE WORLD'S NO.1 PU SUPER GRIP

CBX-4



KB 354

95 gms FRAME WEIGHT
ALUMINIUM HEAD & TEE PIECE
LOW TORQUE SHAFT
ISOMETRIC HEAD
TWO PIECE CONSTRUCTION
1/2 HEAD COVER
FITTED WITH THE WORLD'S NO.1 PU SUPER GRIP

CBX-2



KB 355

93 gms FRAME WEIGHT
640 mm JUNIOR LENGTH
ALUMINIUM HEAD & TEE PIECE
LOW TORQUE SHAFT
TWO PIECE CONSTRUCTION
3/4 HEAD COVER
FITTED WITH THE WORLD'S NO.1 PU SUPER GRIP

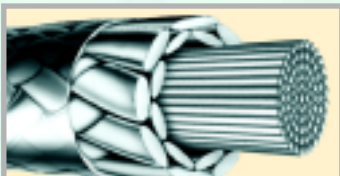
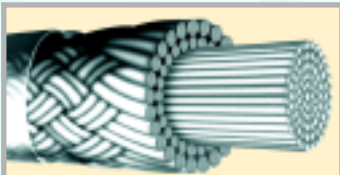
SHUTTLECOCKS

NATIONAL NYLON SHUTTLECOCKS

6 Top quality Nylon Shuttles Cork Base with Moulded Skirt to Improve Spin and Flight Medium Blue and Fast Red

Med Blue x 6	KZ 678
Med Blue x 6 Yellow skirt	KZ 678Y
Fast Red x 6	KZ 679
Fast Red x 6 Yellow skirt	KZ 679Y





RACKET STRINGS

NANO FUSION

- High Playability with Precise Control
- 1.25 Squash 100m coil **KA 638**
- 1.35 Tennis set **KA 642**

KEVLAR

1.3 Tennis 100m coil **KA 634**

- Exceptionally Durable with Hi Tensile Strength and Virtually No Loss in Tension

NANO 65

0.7 Badminton set **KA 648**

- A powerful, responsive and durable string.

NANO 66

0.65 Badminton set **KA 649**

- Power and control with extra repulsion

NANO 67

0.68 Badminton set KA 645

- A powerful, responsive and durable string.

NANO 68

0.66 Badminton set KA 646

- A powerful, ultra responsive and durable string.

TOP SPIN

Tennis 1.35 x 12m set **KA 647**

- Precise Spin Control with Excellent Elasticity
- Great resilience and Durability
- Tennis - 1.35mm sets

NANO 125

1.25 Squash 100m coil **KA 659**

- Power and Durability with exceptional Touch

Q4-645

TOUR TATTOO GEL

NEW
RACKET



let your spirit free

KT 330

325 gms PRO RACKET STRUNG WEIGHT

GEL SYSTEM NANO GRAPHITE-TITANIUM

QUATRO POWER - 4 Nano Gel nodes that stiffen and Strengthen the frame increasing power and control

32-34cms BALANCE POINT

55-65 lbs STRING TENSION

PARALLEL FRAME

SQUARE STRING PATTERN 16/19

MIDSIZE HEAD SIZE - 645 sq cms

LONG SWING STROKE

FULL RACKET COVER

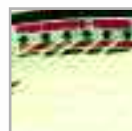
AVAILABLE GRIP SIZES - 2. 3. 4.



Q4-645

TOUR GEL

NEW
RACKET



KT 331

325 gms PRO RACKET STRUNG WEIGHT

GEL SYSTEM NANO GRAPHITE-TITANIUM

QUATRO POWER - 4 Nano Gel nodes that stiffen and Strengthen the frame increasing power and control

32-34cms BALANCE POINT

55-65 lbs STRING TENSION

PARALLEL FRAME

SQUARE STRING PATTERN 16/19

MIDSIZE HEAD SIZE - 645 sq cms

LONG SWING STROKE

FULL RACKET COVER

AVAILABLE GRIP SIZES - 2. 3. 4.



Q4-645

TATTOO LITE GEL

NEW
RACKET



let your spirit free

KT 336

295 gms RACKET STRUNG WEIGHT

GEL SYSTEM NANO GRAPHITE-TITANIUM

QUATRO POWER - 4 Nano Gel nodes that stiffen and Strengthen the frame increasing power and control

32-34cms BALANCE POINT

55-65 lbs STRING TENSION

PARALLEL FRAME

SQUARE STRING PATTERN 16/19

MIDSIZE HEAD SIZE - 645 sq cms

LONG SWING STROKE

FULL RACKET COVER

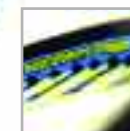
AVAILABLE GRIP SIZES - 1. 2. 3



Q4-690

GEL

NEW
RACKET



KT 333

310 gms RACKET STRUNG WEIGHT

GEL SYSTEM NANO GRAPHITE-TITANIUM

QUATRO POWER - 4 Nano Gel nodes that stiffen and Strengthen the frame increasing power and control

32-34cms BALANCE POINT

55-65 lbs STRING TENSION

PARALLEL FRAME

SQUARE STRING PATTERN 16/19

MIDPLUS HEAD SIZE - 690 sq cms

LONG SWING STROKE

FULL RACKET COVER

AVAILABLE GRIP SIZES - 1. 2. 3. 4



Q4-690

TATTOO GEL

NEW
RACKET



KT 332

310 gms RACKET STRUNG WEIGHT

GEL SYSTEM NANO GRAPHITE-TITANIUM

QUATRO POWER - 4 Nano Gel nodes that stiffen and Strengthen the frame increasing power and control

32-34cms BALANCE POINT

55-65 lbs STRING TENSION

PARALLEL FRAME

SQUARE STRING PATTERN 16/19

MIDPLUS HEAD SIZE - 690 sq cms

LONG SWING STROKE

FULL RACKET COVER

AVAILABLE GRIP SIZES - 1. 2. 3. 4



Q2-650

TITANIUM

NEW
RACKET



KT 334

300 gms RACKET STRUNG WEIGHT

NANO GRAPHITE-TITANIUM

DUAL POWER - 2 Nano Gel nodes that stiffen and Strengthen the frame increasing power and control

32-34 cms BALANCE POINT

55-65 lbs STRING TENSION

DUAL FRAME 26.5 - 27 - 26.5 mm

STAGGERED STRING PATTERN 16/18

MIDPLUS HEAD SIZE - 650 sq cms

MEDIUM SWING STROKE

TITANIUM FULL COVER

FITTED WITH THE WORLD'S NO.1 PU SUPER GRIP



Q2-650

GRAPHITE

NEW
RACKET



KT 335

310 gms RACKET STRUNG WEIGHT

NANO GRAPHITE

DUAL POWER - 2 Nano Gel nodes that stiffen and Strengthen the frame increasing power and control

32-34 cms BALANCE POINT

55-65 lbs STRING TENSION

DUAL FRAME 26.5 - 27 - 26.5 mm

STAGGERED STRING PATTERN 16/18

MIDPLUS HEAD SIZE - 650 sq cms

MEDIUM SWING STROKE

3/4 HEAD COVER

FITTED WITH THE WORLD'S NO.1 PU SUPER GRIP



REVO PRO

NEW
RACKET



KT 321

TITANIUM COMPOSITE

320 gms RACKET STRUNG WEIGHT

TRI TECH FRAME

32-34 cms BALANCE POINT

45-50 lbs STRING TENSION

DUAL FRAME 24 - 24 - 26 mm

MIDPLUS HEAD SIZE - 690 sq cms

MEDIUM SWING STROKE

3/4 HEAD COVER

FITTED WITH THE WORLD'S NO.1 PU SUPER GRIP

TENNIS RACKETS

COACH 27



KT 308

7000 SERIES ALUMINIUM
PARALLEL 'O' BEAM FRAME
MUSCLE WAVE SYSTEM
MIDSIZE HEAD SIZE
LONG SWING STROKE
FITTED WITH THE WORLD'S NO.1
PU SUPER GRIP

COACH SERIES

JUNIOR TENNIS RACKETS

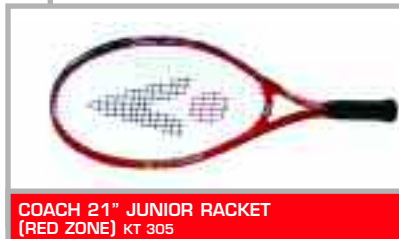
7000 SERIES ALUMINIUM
PARALLEL 'O' BEAM FRAME
MUSCLE WAVE SYSTEM
LTA TRAFFIC LIGHT SCHEME
MIDSIZE HEAD
3/4 HEAD COVER



COACH 25" JUNIOR RACKET
(GREEN ZONE) KT 307



COACH 23" JUNIOR RACKET
(ORANGE ZONE) KT 306



COACH 21" JUNIOR RACKET
(RED ZONE) KT 305



COACH 19" JUNIOR RACKET
(RED ZONE) KT 304

THE COACH JUNIOR RACKETS ARE
DESIGNED TO CONFORM TO THE LTA
TRAFFIC LIGHT SCHEME

GREEN ZONE - COACH 25
ORANGE ZONE - COACH 23
RED ZONE - COACH 21 AND COACH 19

TENNIS BALLS

PRESSURISED BALLS -
4 BALL CAN MEET ITF SPECIFICATIONS

ACE TENNIS BALLS - **ITF** approved
English Felt Ace x 4 KZ 850

CLUB TENNIS BALLS -
American Felt Club x 4 KZ 851

The following balls comply with the
LTA Traffic Light Scheme

Mid Green -

ITF Approved Low Pressure Transition Ball

LoBo Orange -

ITF Approved Low Pressure Transition Ball

Solo 70 Red -

ITF Approved Low Pressure Transition Ball
7 cm diameter ball

Solo Red - Low Pressure Transition Ball

Pro ZP - Zero Pressure Coaching/Training Ball

Mini Red - 80mm Moulded Foam Starter Ball

ALL TENNIS BALLS
SOLD IN DOZENS

Mid KZ 854
LoBo KZ 852
Solo 70 KZ 8567
Solo KZ 856
Pro ZP KZ 853
Mini KZ 855



Tennis Ball Bucket
holds 72 balls



CRX PRO



KQ 470

CRX GRAPHITE



KQ 471

CRX FUSION PRO



KQ 473

CRX TOUR



KQ 472

175 gms FRAME WEIGHT
SUPERLIGHT HI-MODULUS GRAPHITE - TITANIUM
ONE PIECE CONSTRUCTION
CONSTANT TAPER
MIDPLUS HEADSIZE
WRIST STRAP
FULL RACKET COVER
FITTED WITH THE WORLD'S NO.1 PU SUPER GRIP

185 gms FRAME WEIGHT
HI-MODULUS GRAPHITE
ONE PIECE CONSTRUCTION
CONSTANT TAPER
MIDPLUS HEADSIZE
WRIST STRAP
FULL RACKET COVER
FITTED WITH THE WORLD'S NO.1 PU SUPER GRIP

185 gms FRAME WEIGHT
ALUMINIUM GRAPHITE FUSION
PARRALEL BEAM
MIDPLUS HEADSIZE
WRIST STRAP
3/4 HEAD COVER
FITTED WITH THE WORLD'S NO.1 PU SUPER GRIP

195 gms FRAME WEIGHT
7000 SERIES ALUMINIUM
PARALLEL BEAM
MIDPLUS HEADSIZE
WRIST STRAP
3/4 HEAD COVER
FITTED WITH THE WORLD'S NO.1 PU SUPER GRIP

RACKETBALL BALLS

KARAKAL LBB
(low bounce ball)

Non Marking Rubber

Available Blue or
traditional Black

Specially Designed for
use on a Squash Court

Black or Blue x 1 **KZ 401**
Tub x 2 **KZ 402**



RACKETBALL RACKETS

All items in this brochure are subject to availability and may be withdrawn or replaced without prior notice. Not all colours are available in some countries.



All items in this brochure are subject to availability and may be withdrawn or replaced without prior notice. Not all colours are available in some countries.